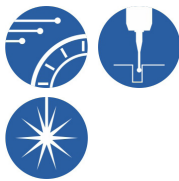




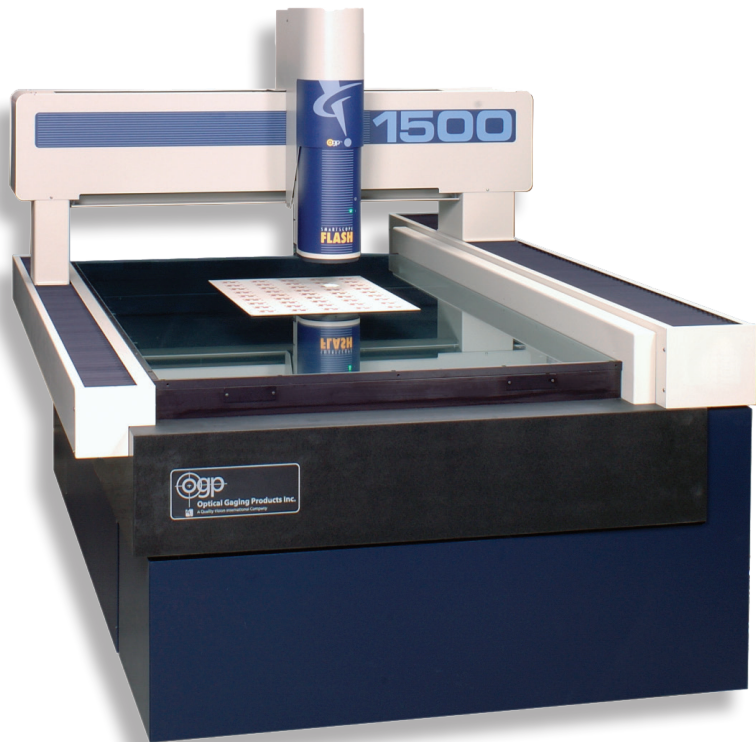
SmartScope® Flash 1500

- *Open work area* – Optics mounted on a moving bridge — part remains stationary and easily accessible
- *Precision optics* – High quality Zoom 12 AccuCentric® zoom lens autocalibrates with every magnification change
- *Exclusive illumination to measure the most challenging parts* – Substage, TTL, and SmartRing™ light illuminate parts from all angles
- *Multisensor versatility* – Optional touch probe and laser sensors

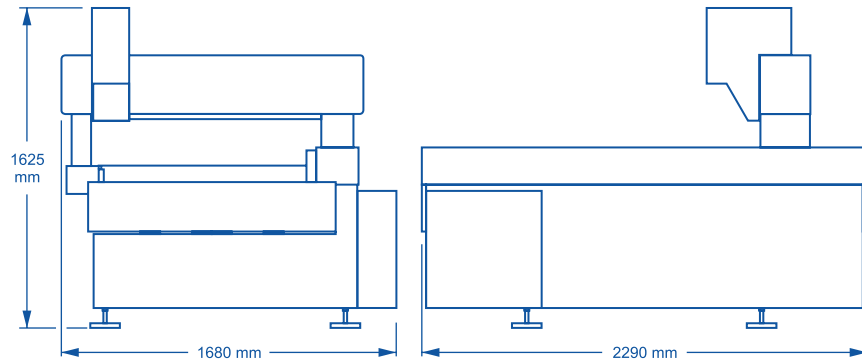
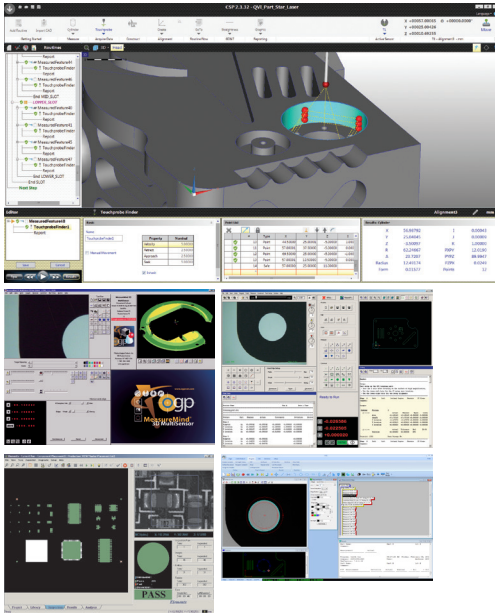
Large XY-Travel Multisensor Dimensional Measuring System



Axis	Travel (mm)
X axis	900
Y axis	1500
Z axis	200



SmartScope® Flash 1500



Choose the QVI metrology software best suited to your manufacturing setting — 3D CAD-based ZONE3®, MeasureMind® 3D, Measure-X®, VMS™ or Elements®.

Machine Weight: 2590 Kg
Crated Weight: 3000 Kg

	Standard	Optional
XYZ travel	900 x 1500 x 200 mm	
XYZ scale resolution	0.5 µm, with dual Y-axis scales	
Drive system	DC servo with 4-axis control (X,Y,Z,zoom); with multifunction handheld controller and dual Y-axis drives	
Worktable	Anodized, with fixture holes, removable stage glass, 100 kg recommended max payload	
Optics	Zoom 12 AccuCentric® auto-calibrating zoom with up to 25 calibrated positions	0.5x, 0.75x, 1.5x, and 2.0x lens attachments; 2.5x and 5.0x laser lenses (for use with or without optional TTL laser); LED grid projector; TTL laser pointer (not available with TTL laser sensor)
FOV size (std optical configuration)	Measured diagonally, 10.1 mm (low mag) to 1.1 mm (high mag)	
Illumination	LED substage (monochromatic), LED coaxial TTL surface, 8 sector/8 ring SmartRing™ LED (white)	<ul style="list-style-type: none"> Flexible SmartRing light for long working distance optical configurations (in lieu of standard SmartRing light) 8 sector/6 ring Vu-Light™ LED ring light, standard working distance (70 mm), or low incidence working distance (36 mm) (in lieu of standard SmartRing light) Red or green SmartRing light (in lieu of standard white SmartRing light)
Camera	High resolution color metrology camera	
Image processing	256 level grayscale processing with 10:1 subpixel resolution	
Sensor options (contact OGP for possible combinations of sensors)		Touch probe and change rack (touch probe not available with optional Vu-Light), on-axis TTL laser, off-axis DRS™ laser
Controller	Windows® based, with up-to-date processor and on board networking/communication ports	
Controller accessory package		24" flat panel LCD monitor, or dual 24" flat panel LCD monitors, keyboard, 3-button mouse (or user supplied)
Software	QVI Portal, including: <ul style="list-style-type: none"> Portal Navigator Independent Calibration Engine (ICE) Multimedia Content Viewer SmartLink™ 	Metrology software: ZONE3® or ZONE3 Pro, MeasureMind® 3D MultiSensor, Measure-X®, VMS™, Elements® Productivity software: MeasureFit® Plus, SmartFit® 3D, SmartProfile® Offline software: ZONE3, MeasureMind 3D MultiSensor, Measure-X, VMS
Power requirements	115/230 vac, 50/60 Hz, 1 phase, 700 W	
Rated environment	Temperature 18-22° C, stable to ±1° C; 30-80% humidity; vibration <0.001g below 15 Hz	
Operating environment, safe operation	15-30° C	
XY area accuracy¹	$E_2 = (4.5 + 8L/1000) \mu\text{m}^{2.3}$	
Z linear accuracy¹	$E_1 = (3.0 + 8L/1000) \mu\text{m}^3$	

¹Where L = measuring length in mm. Applies to thermally stable system in rated environment. All optical accuracy specifications at maximum zoom lens setting.
²Measured in the standard measuring plane. The standard measuring plane is defined as a plane that is within 25 mm of the worktable surface.
³E_z Z axis linear and E₂ XY area accuracy standards are described in QVI Publication Number 790762.



Phone: (585) 544-0400 • (800) 647-4243
 Fax: (585) 544-8092
 info@ogpnet.com
 www.ogpnet.com

