



Certified  
**CP** Products  
Comparator  
Products



## CC-30 Contour Projector®

### Ultra-Large Capacity Optical Comparator

The **CC-30** is a large capacity optical comparator that offers a large, bright image and relatively compact footprint.

With the 30" diameter screen at eye level and easy access to parts and fixtures, the CC-30 is designed to provide great performance right where you need it.

- Includes mercury-arc profile lighting as standard, with mercury-arc surface light optional
- Rigid construction and heavy duty components allow for durability and long-term reliability
- Optional VidiProbe® video measurement and eCAD® virtual chart gage system

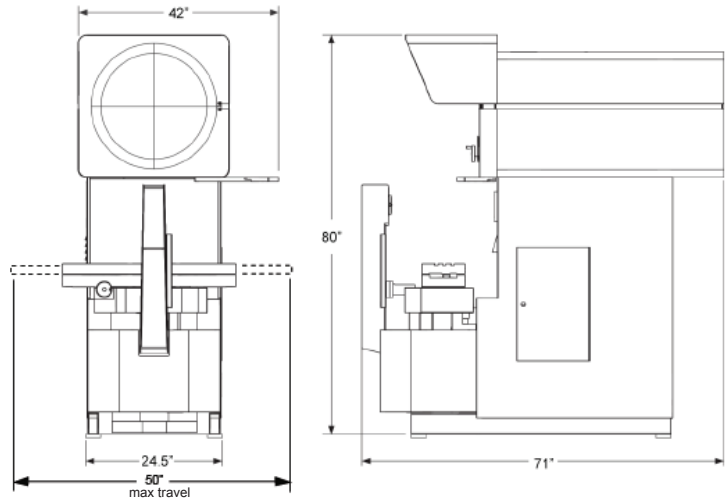
Proudly designed and manufactured in the United States of America



# CC-30 Contour Projector

## Available Options and Accessories:

- Adjustable iris assembly
- Digital video screen image capture
- EdgeScan internal automatic edge detection (requires a Quadra-Chek DRO)
- Projectron® automatic grayscale edge detection (requires a Q-Check DRO)
- VidiProbe™ Video Measurement and Measure-X 2D software
- Fixture and calibration reticles
- Overhead light shield
- Glass and plastic overlay charts
- High magnification collimator
- Swing away lamphouse
- Surface illuminator concentrator (reduces FOV at selected mag)
- Rotary Indexer
- Service and support contracts



## Optional Software:

- MeasureFit® Plus
- SmartReport® with real-time statistics
- Quadra-Chek® QC-Wedge (requires Microsoft® Excel™)
- eCAD® for electronic CAD overlay & virtual chart systems
- eChek™ Metrology Software

Crated : 2,345 lb  
Crated for Export: 2,700 lb

|  | Standard   | Optional   |
|--|--|--|
| <b>XY Travel Range</b>                   | 15" x 9"   | 15" x 10", 18" x 9", 18" x 10"                       |
| <b>Helix Angle Range</b>                 |  | ±7.5° with pivoting worktable assembly and zero stop |
| <b>Focus Travel (Z)</b>                  | 3" with precision fine adjustment  |  |
| <b>XY Positioning</b>                    | Precision cast iron vertical elevating assembly, mechanical bearing slides attached to a heavy duty cast worktable support structure |  |
| <b>Throat Clearance</b>                  | 20"  |  |
| <b>XY Scale Resolution</b>               | 0.00004"   | 0.00002"   |
| <b>XY Drive System</b>                   | Motorized, DC servo, with variable speed joystick and X & Y axis manual fine adjustment  |  |
| <b>Worktable</b>                         | Heavy duty cast iron nickel plated worktable, 32" x 8"   |  |
| <b>Recommended Maximum Load Capacity</b> | 300 lb   |  |
| <b>Optical System</b>                    | Telecentric with upright, and un-reversed image  |  |
| <b>Screen Size</b>                       | 30" diameter viewing area screen, with integral hood   |  |
| <b>Screen Type</b>                       | Ground glass with 90° centerlines and clips for mounting standard overlay charts   |  |
| <b>Protractor</b>                        | Screen rotation protractor with ± 360° motion, digital display, 0.01° or 1' display  |  |
| <b>Working Distance</b>                  | 8.4"   |  |
| <b>Lens</b>                              | 10X  | 20X, 31.25X, 50X, 62.5X, 100X                        |
| <b>Lens Mount</b>                        | One position, fixed  | Five position, motorized turret                      |
| <b>Illumination</b>                      | 200 W mercury arc direct projection with green filter  | 200 W mercury arc surface                            |
| <b>Electronics</b>                       | Choice of Quadra-Chek® QC-100 or QVI Q-Check®  | Quadra-Chek QC-200 or QC-300                         |
| <b>Power Requirements</b>                | 115VAC, 60 Hz, 1ϕ, 2500W   |  |