

CC-20 Contour Projector®

The **CC-20** optical comparator is a precision instrument designed for the shop floor. It has extensive standard features and a range of options that allow you to configure a system to meet your specific measurement needs.

The eye level 20" diameter screen and conveniently located DRO make measurements fast and easy.

- Includes first in class high brightness TruLight® LED profile illumination with variable intensity control
- High load capacity, nickel-plated worktable easily accommodates large, heavy machined parts and fixtures
- Optional VidiProbe® video measurement and eCAD® virtual chart gage system

Proudly designed and manufactured in the United States of America

High Capacity Optical Comparator for Large Parts



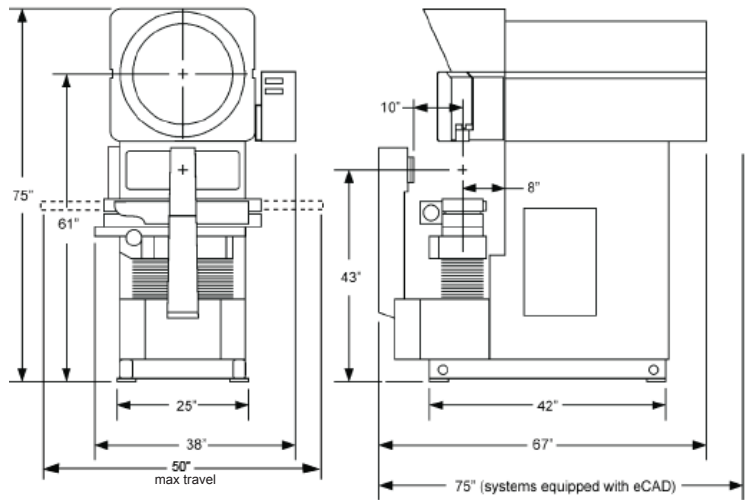
CC-20 Contour Projector

Available Options and Accessories:

- Adjustable direct projection iris
- Digital video screen image capture
- EdgeScan™ internal automatic edge detection (requires a Quadra-Chek DRO)
- Projectron® automatic grayscale edge detection (requires a Q-Check DRO)
- VidiProbe™ Video Measurement and Measure-X 2D software
- Fixture and calibration reticles
- Fresnel lens
- Overhead light shield
- Glass and plastic overlay charts
- Swing away lamphouse
- Rotary screen ring and digital protractor for interchangeable glass receiving screens
- Surface illuminator concentrator (reduces FOV at selected mag)
- Rotary Indexer
- Service and support contracts

Optional Software:

- MeasureFit® Plus
- SmartReport® with real-time statistics
- Quadra-Chek® QC-Wedge (requires Microsoft® Excel™)
- eCAD® for electronic CAD overlay & virtual chart systems
- eChek™ Metrology Software
- Measure-X® 2D Metrology Software



Uncrated: 1,660 lb
 Crated : 1,875 lb
 Crated for Export: 2,350 lb

	Standard	Optional
XY Travel Range	15" x 9"	18" x 9"
Helix Angle Range		±7.5° with pivoting worktable assembly and zero stop
Focus Travel (Z)	3" with precision fine adjustment	
XY Positioning	Precision, cast iron vertical elevating assembly with heavy duty substage for vertical motion	
Throat Clearance	19"	
XY Scale Resolution	0.00004"	0.00002"
XY Drive System	Motorized, DC servo, with variable speed joystick and X & Y axis manual fine adjustment	
Worktable	Heavy duty cast iron nickel plated worktable, 32" x 8"	
Recommended Maximum Load Capacity	250 lb	
Optical System	Telecentric with upright, un-reversed image	
Screen Size	20" diameter viewing area screen, with integral hood	
Screen Type	Ground glass with 90° centerlines and clips for mounting standard overlay charts	
Protractor	Screen rotation protractor with ± 360° motion, digital display, 0.01° or 1' display	
Working Distance	8.4"	
Lens	10X	20X, 31.25X, 50X, 62.5X, 100X
Lens Mount	Fixed Mount	Internal, motorized 5 position lens turret
Illumination	Profile light: bright green LED, continuously variable intensity control	Through-the-lens coaxial surface light, white brightfield, LED, continuously variable intensity
Electronics	Choice of Quadra-Chek® QC-100 or QVI Q-Check®	Quadra-Chek QC-200 or QC-300
Power Requirements	115/230VAC, 50/60 Hz, 1φ, 1200W	



1175 North Street
 Rochester, NY 14621
 Phone: (585) 758-1300 • (877) 764-6397
 Fax: (585) 506-4307
www.certifiedcomparator.com

